

DEKOR ISLAND
ISLAND



ARIETTA

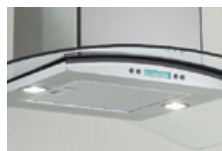
With broad wings, Dekor Island takes flight with graceful 36" arched glass, which allows natural light to illuminate the surface below. The expansive glass wings are complemented by reflective stainless steel and together are an eye catching centerpiece for the kitchen. More than a pretty face, the Dekor Island features High-tech LCD controls which manage multiple functions, including dual LED lighting, 3 speed blower, plus it automatically turns on under high heat and even has a sensor that tells you when to clean your dishwasher-safe anodized aluminum mesh filters. The Dekor Island features a telescopic chimney for up to 10'2" ceilings. Designed for standard ducted installation, but can also be installed as a recirculating system using the Recirculating Kit, available as an accessory.



2 LED Lamps



Touch Controls
with LCD Display



1 Dishwasher-Safe
Anodized Aluminum
Filter

MODELS

ADI436SSA Dekor Island 36" Stainless

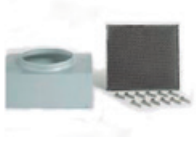
DIMENSIONS

(36"W x 25^{1/4}"D x 1^{15/16}"H)

Features

Size (in) & Type	36" Wide, Island Hood
Finish	Stainless Steel + Glass
Controls	Touch Controls with LCD Display
Illumination	2 LED lamps (700 mA & 2.1 W per lamp) 1 Light Intensity
Installation Type	Ducted or Recirculating Installation (Recirculating Kit Sold Separately)
Blower Performance	400 CFM, 3 – Speed Internal Speed 1 - 160 CFM - 0.7 Sones Speed 2 - 280 CFM - 1.8 Sones Speed 3 - 400 CFM - 5.5 Sones
Filter Type	1, Dishwasher-Safe, Anodized Aluminum Mesh
Duct Transition	6" (Round, Top)
Telescopic Chimney Extension	For heights 7'5" to 10'2" (Ducted out) For heights 7'9" to 10'6" (Recirculating)
Electrical	120 V – 60 Hz 265 Watt at 2.2 Amps

Accessories



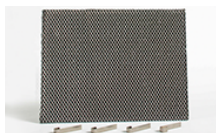
Recirculating Kit
Dekor Island

CODE: KIT01938



No Return Valve
6" Round

CODE: KIT0102873



CFM Reduction Kit
CODE: KIT02748

Replacement Carbon
Filter KIT (Qty 1 Filter)
CODE: KIT01658



Replacement Aluminum
Mesh Grease Filter (Qty 1)
CODE: KIT01668

Product Dimensions

